


Quick Guide for WPC-832 Modbus Serial to Wi-Fi Converters Wi-Fi, Ethernet and Mobile Phone connection

1. Connect power to the Converter




1.1 WiFi connection:

1.1.1 About 10 seconds after power on, can run IP search tool  to find WPC-832's IP.

1.1.2 About 45 seconds after power on. WPC-832 can search SSID.


1.2 Ethernet connection:

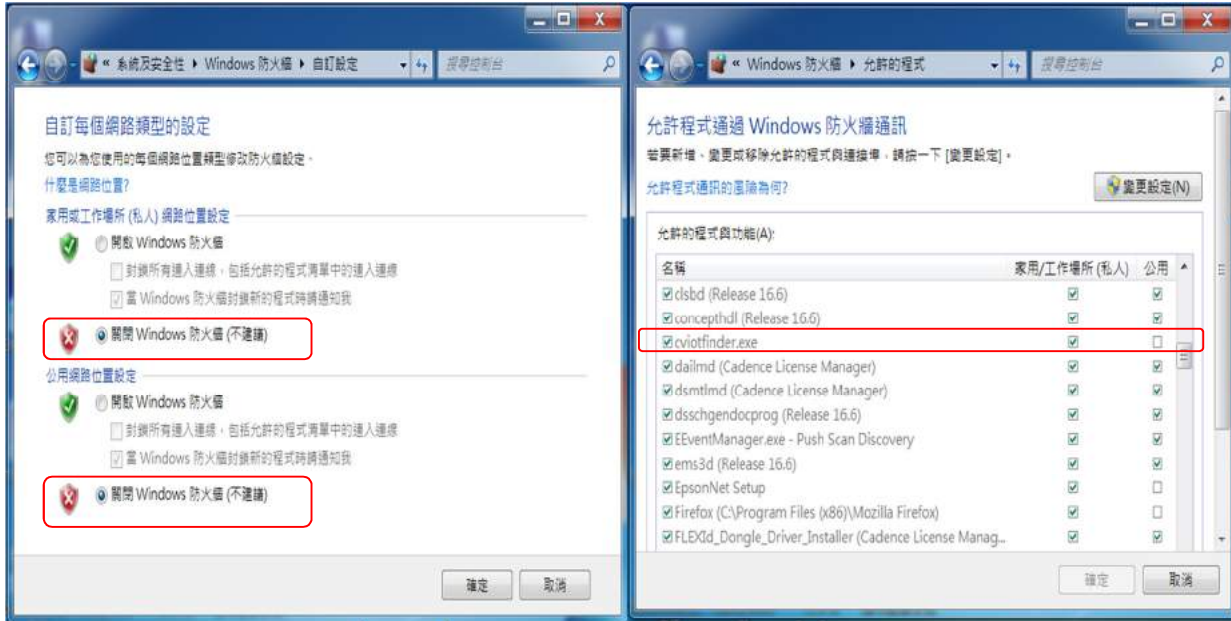
1.2.1 About 55 seconds after power on, can run IP search tool  to find WPC-832's IP.


2. WIFI link test:

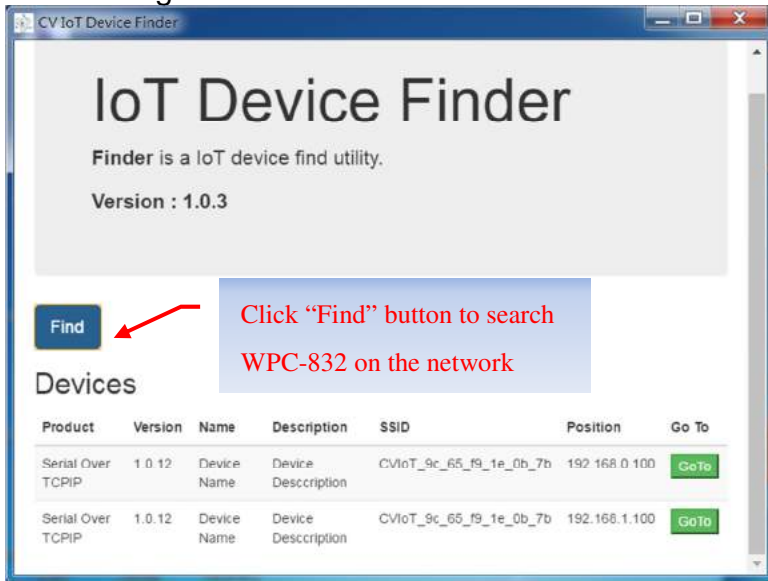
2.1 Open Window searching Wi-Fi SSID. There is a label on the back of WPC-832 printed with login and MAC_ID.



3. Upon running IP search tool  (CvlotFinder), if a firewall warning pop up, please click to accept the program pass through firewall.



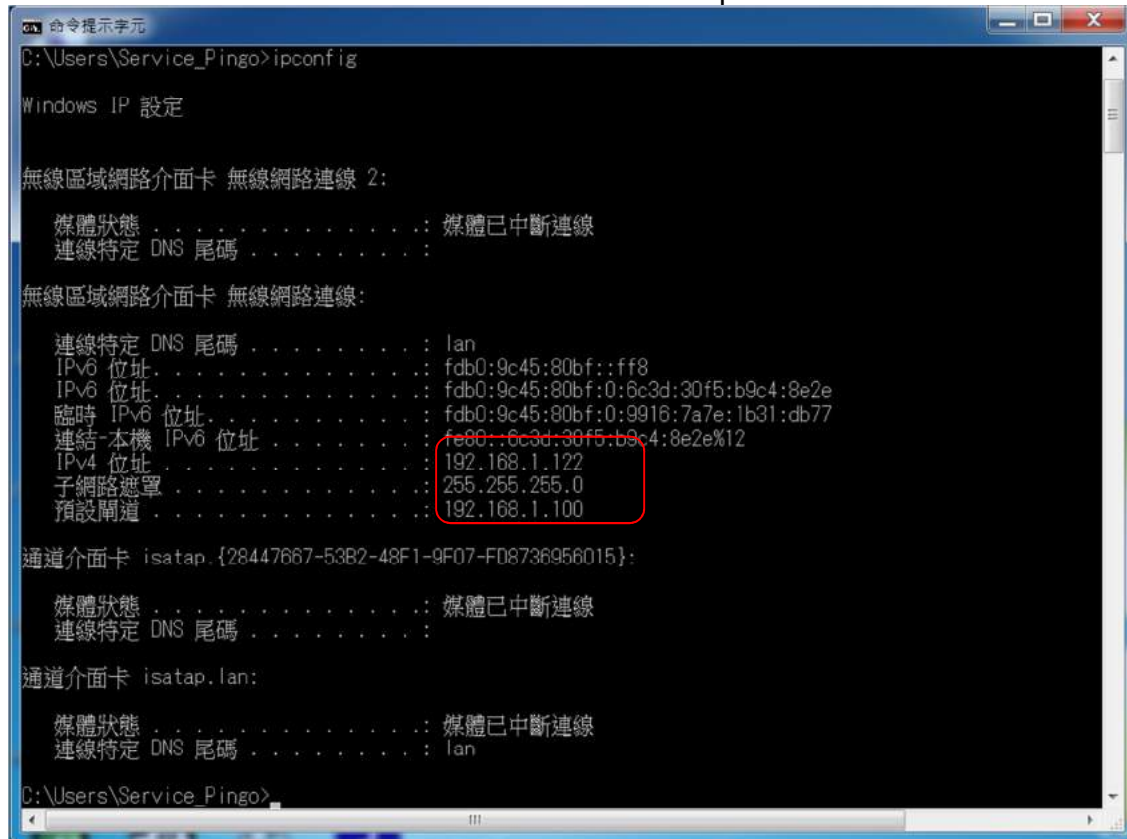
4. Running CvlotFinder 



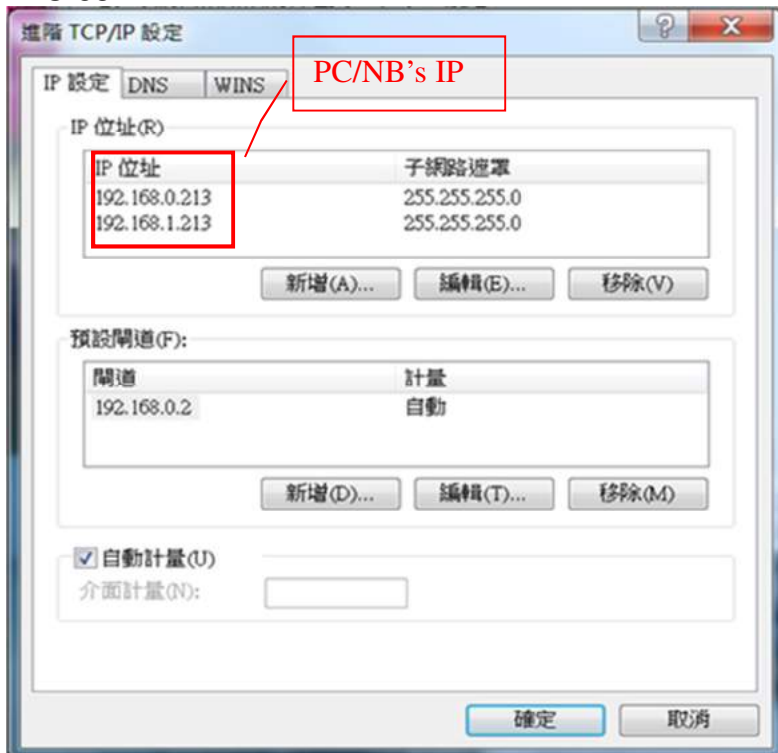
5. Search IP completed.



6. Check PC or NB's IP must be same subnet as per WPC-832.

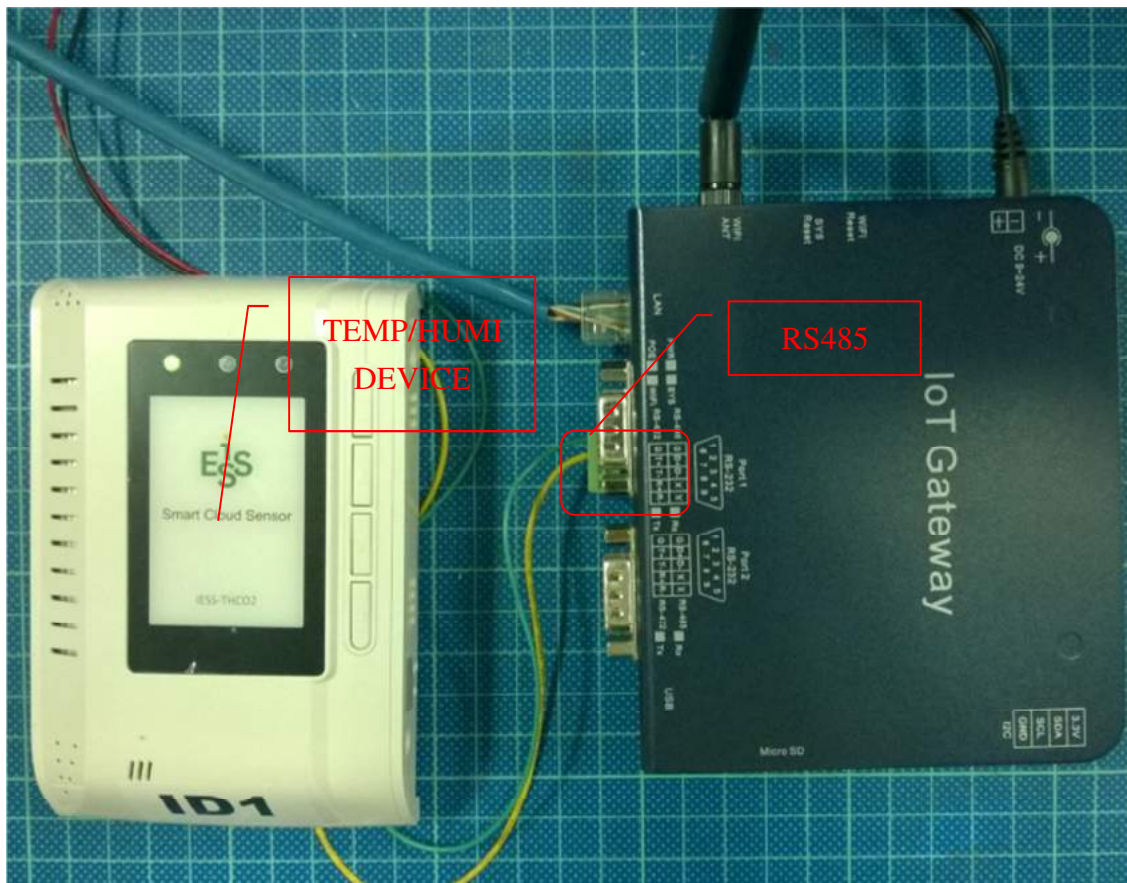


7. If PC or NB's IP not in same subnet as per WPC-832, please modify or add new IP as per subnet of WPC-832.



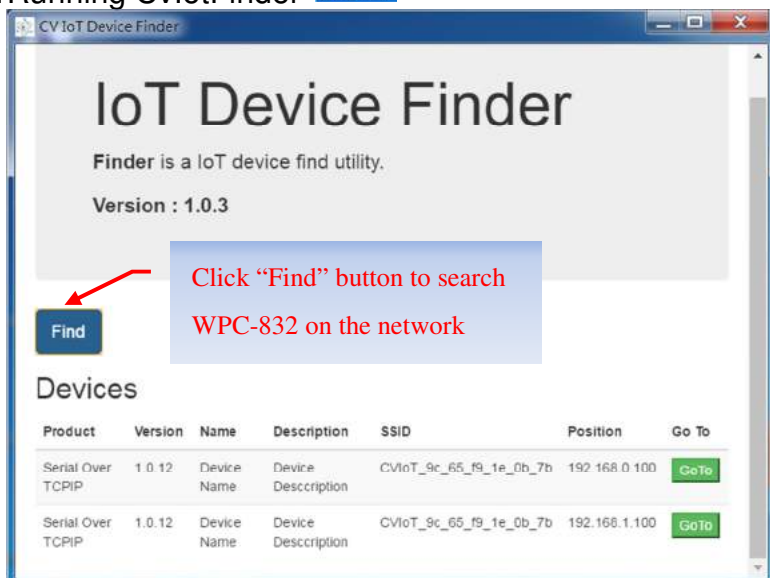
8. WIFI Modbus Test (RS485)

8.1 Device connection

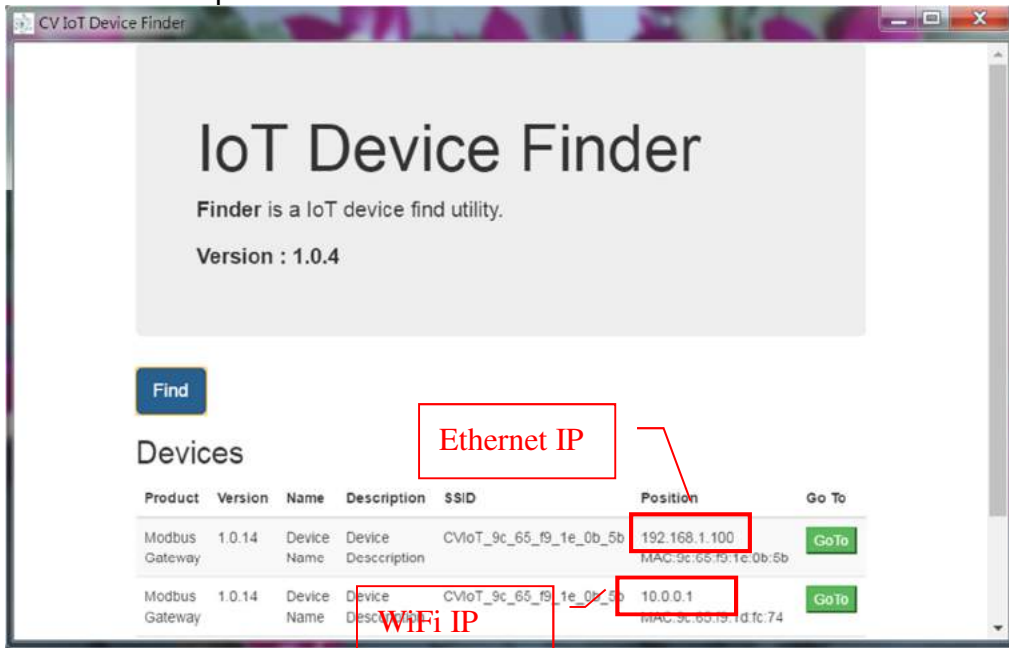


Web page Configuration:

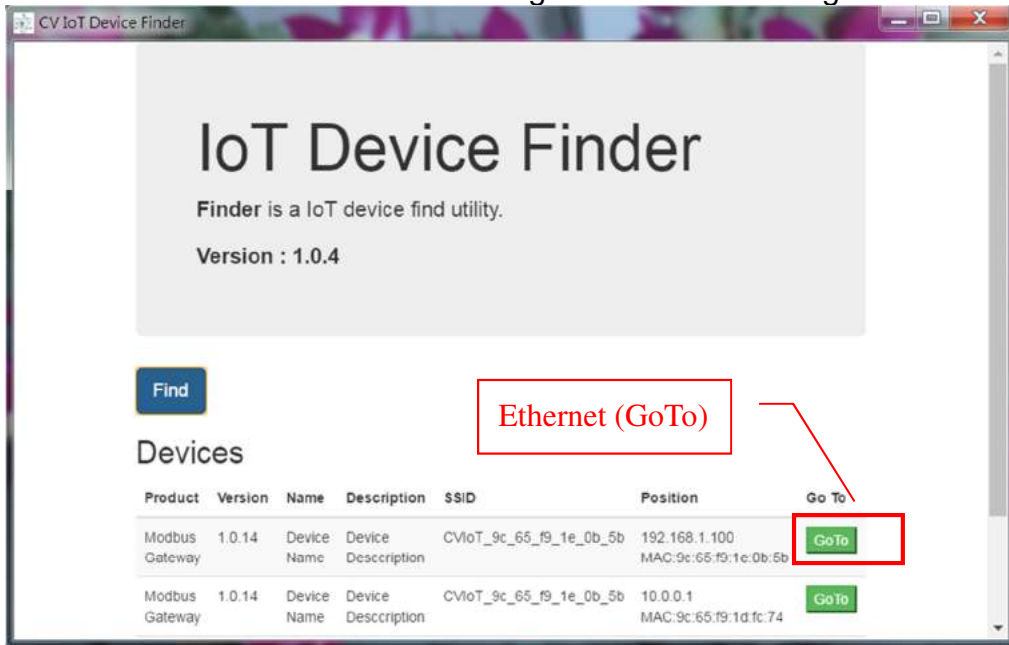
16. Running CvlotFinder



17. Search IP completed.



18. Click "GoTo" button of Ethernet IP to go into the web configuration.



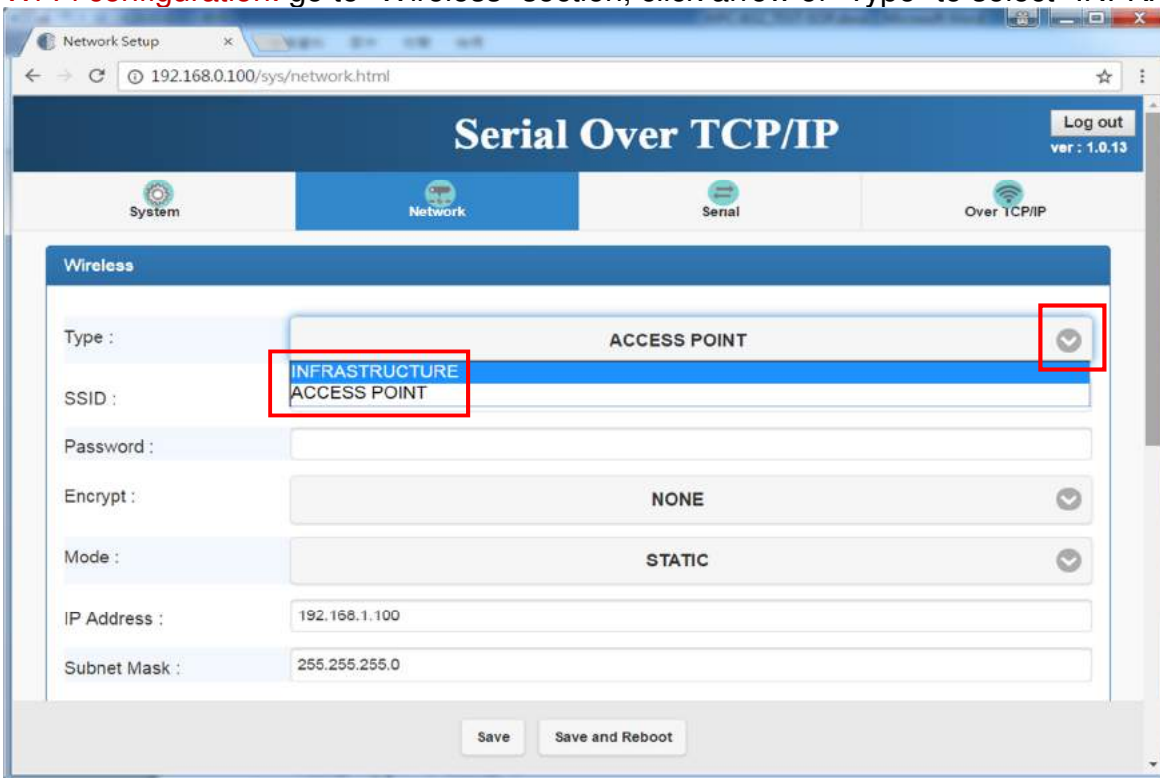
19. Input Login/Password: admin/admin



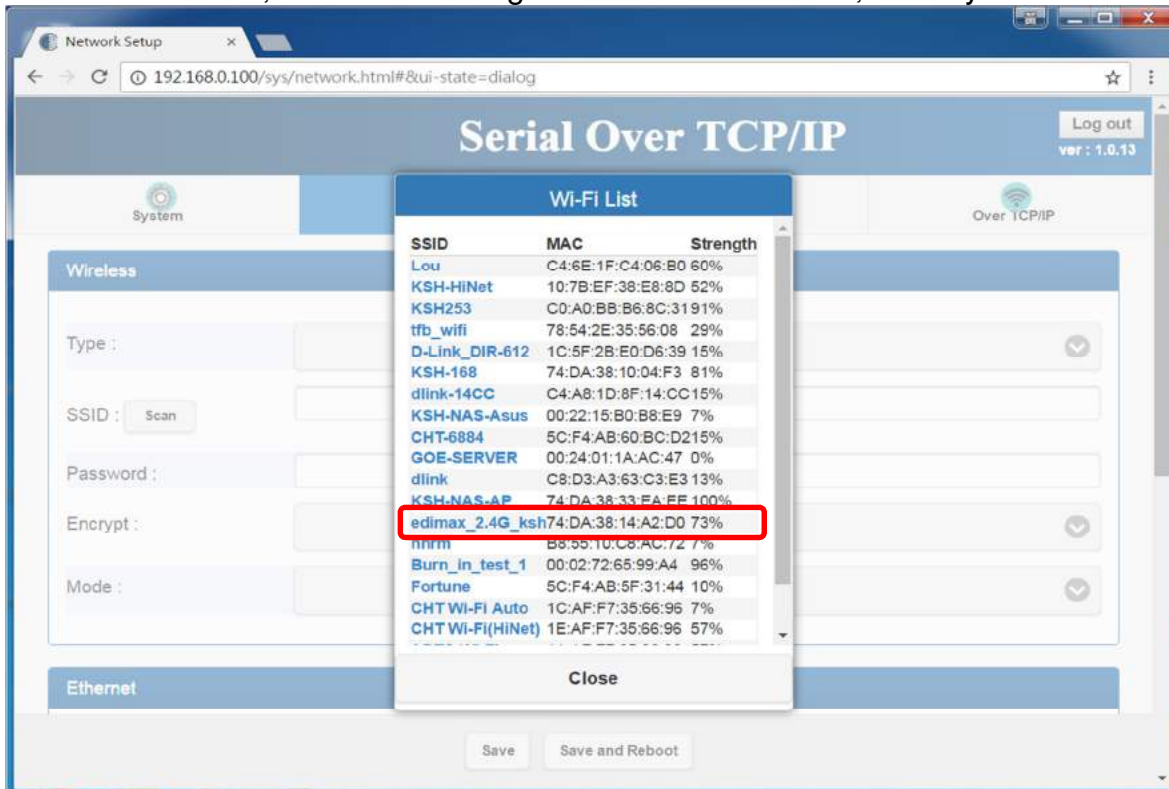
20. Click page "Network"



21. **Wi-Fi configuration:** go to "Wireless" section, click arrow of "Type" to select "INFRASTRUCTURE"



22. Go to article SSID, click “Scan” will get list of available SSID, select your one to link.



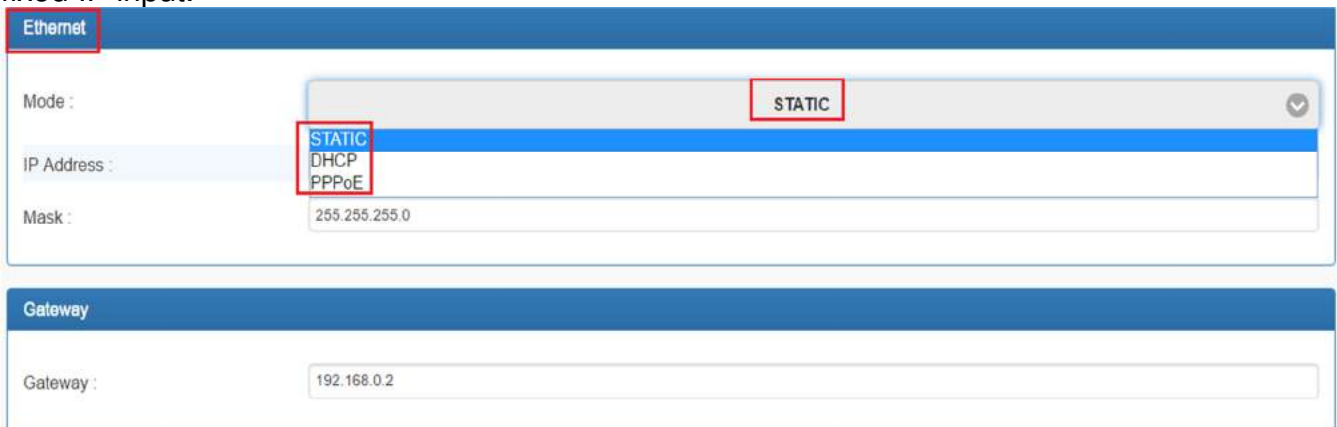
23. Input password for the AP and assign “STATIC” and input a fixed IP address. Click “Save” when change to other pages or “Save and Reboot”.



24. In NB/PC, choose same SSID to link. NB/PC is better to close Ethernet at the moment in order to prevent conflict..



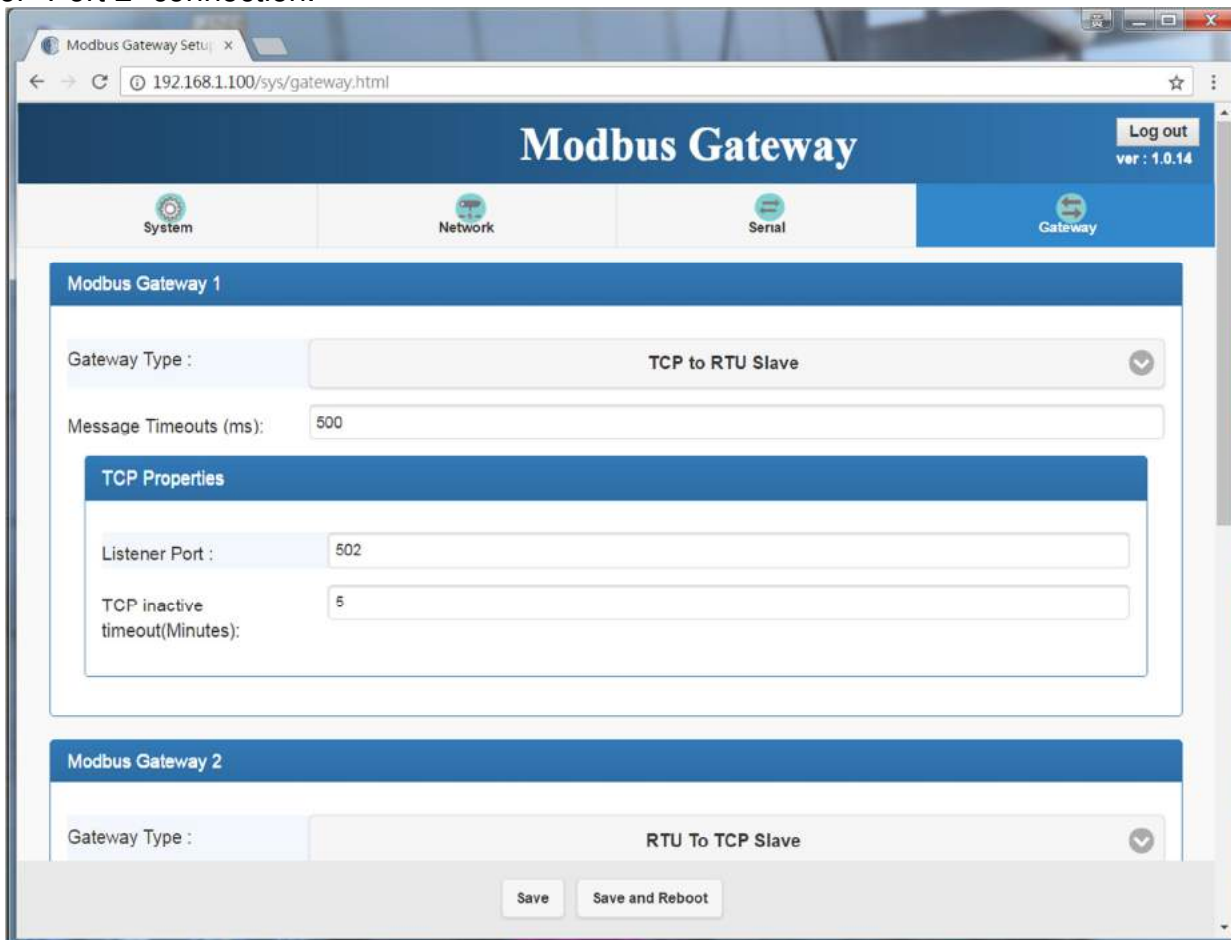
25. **Ethernet configuration:** go to "Ethernet" section, click arrow of "Mode" to select. "STATIC" need a fixed IP input.



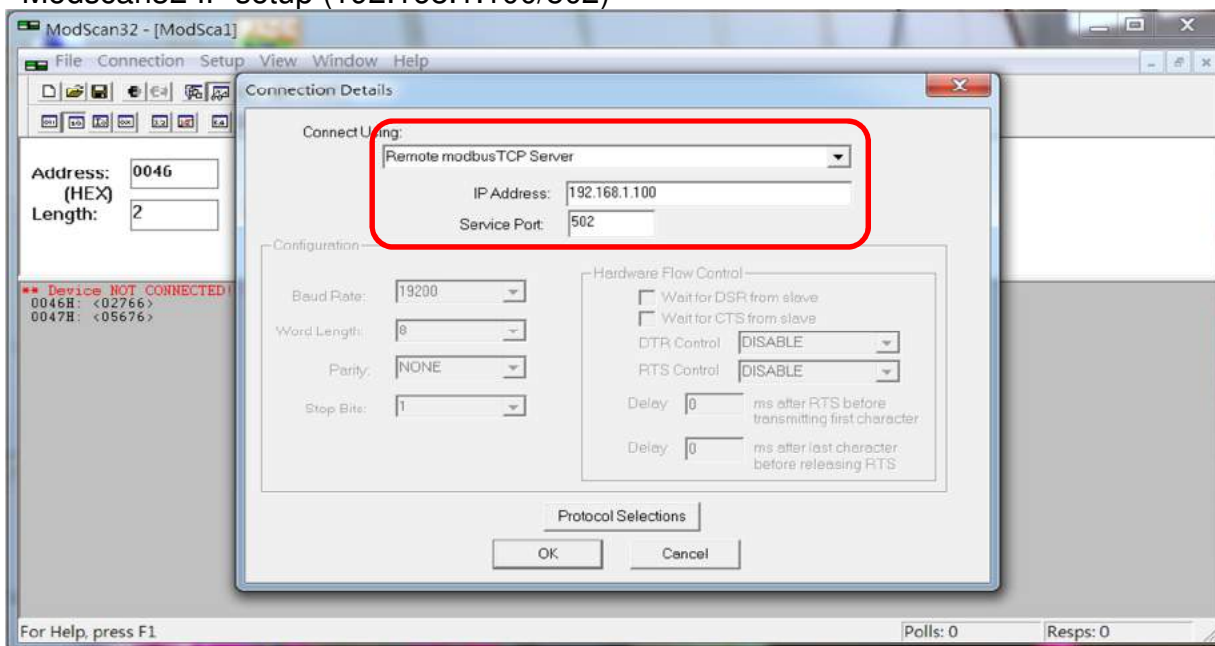
26. Click page "Serial" to set up serial port parameters (9600,n,8,1), "Serial 1" is for "Port 1" connection, "Serial 2" is for "Port 2" connection.



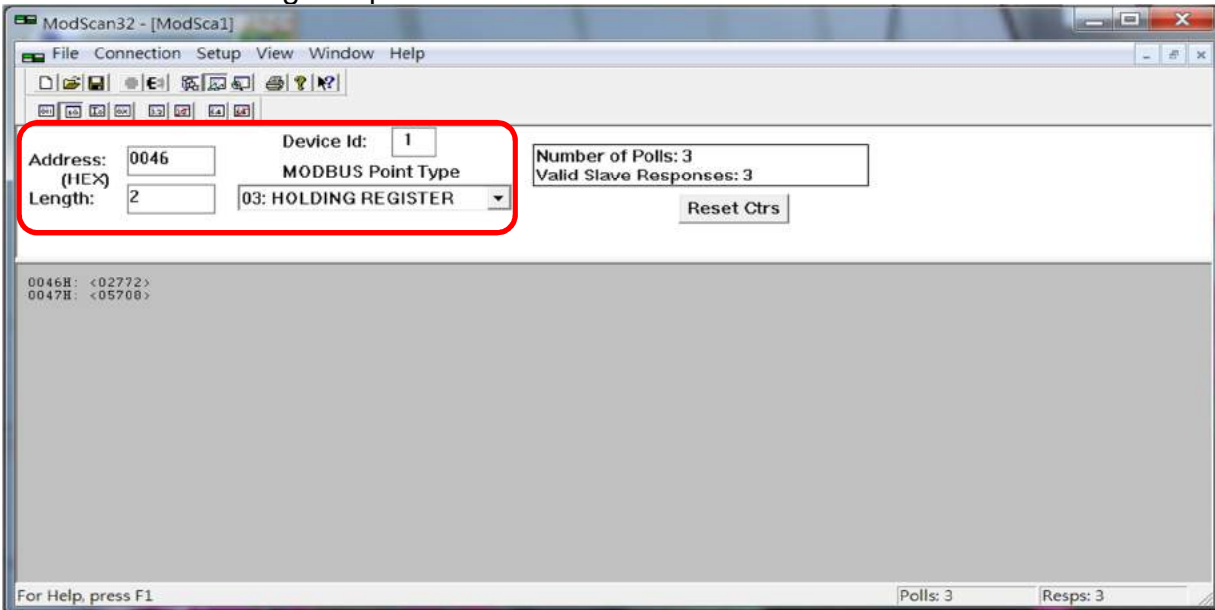
27. Click page "Gateway" to set up parameters, "Gateway 1" is for "Port 1" connection, "Gateway 2" is for "Port 2" connection.



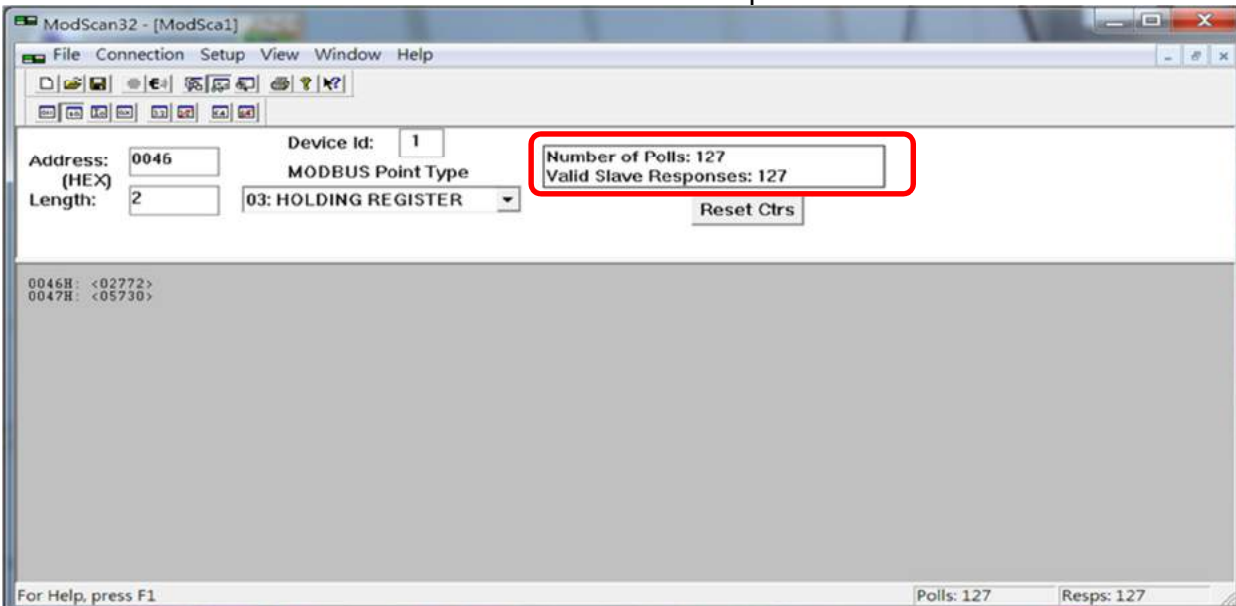
28. Modscan32 IP setup (192.168.1.100/502)



29. Modscan32 reading setup



30. Numbers of "Number of Polls" and "Valid Slave Responses" are same means normal condition.



31. Reset (if needed)

Ensure power is on, press "WiFi Reset" button for over 25 seconds then release. WEP-832 will set configuration back to default.

