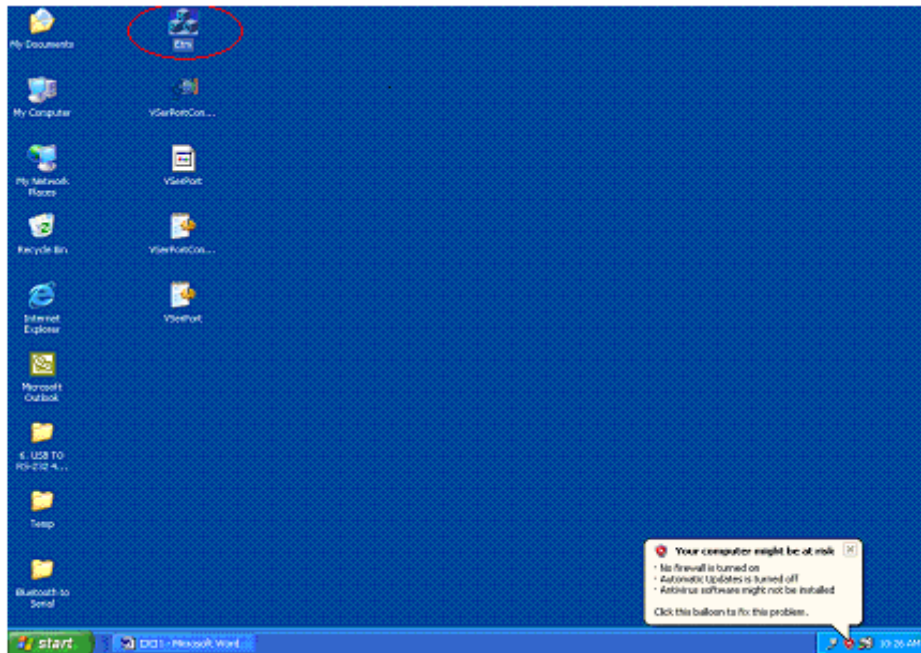


Quick Installation Guide

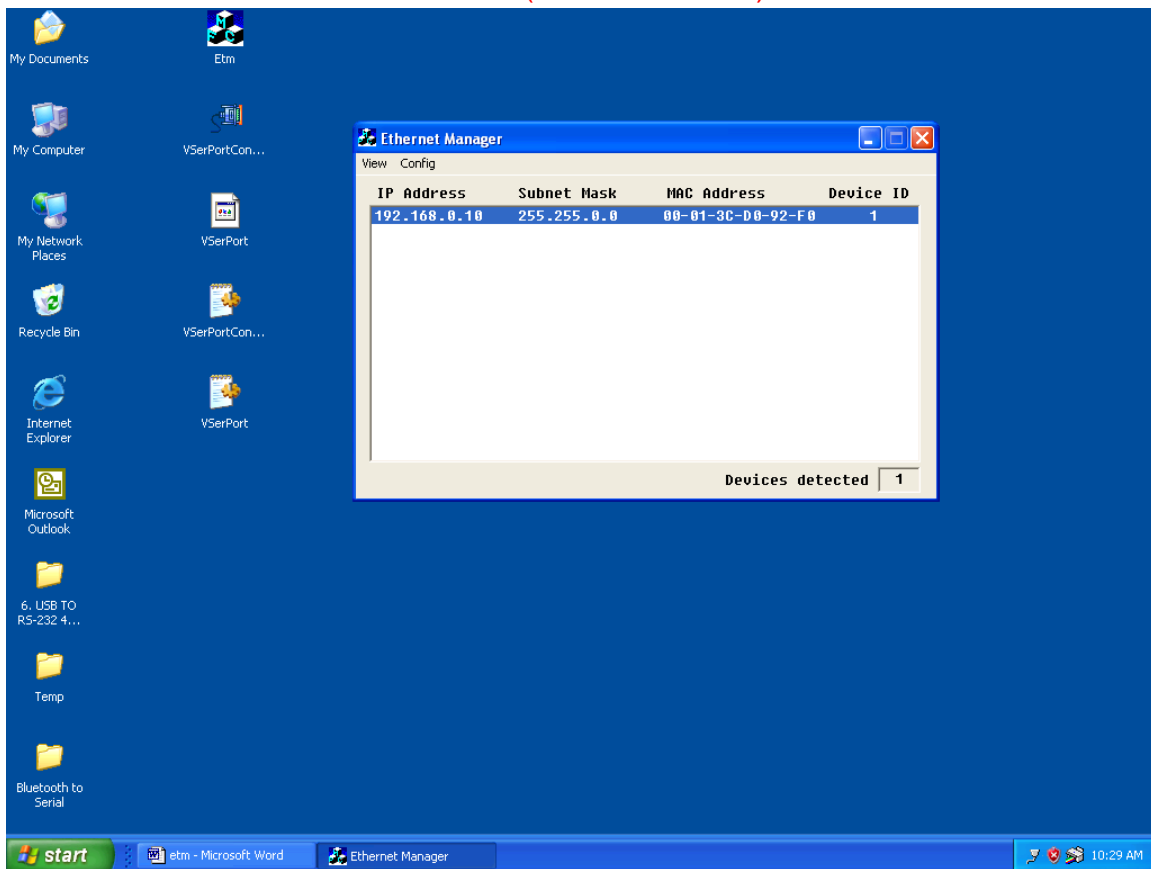
1. Equipment set up: (One HUB , PC , Converter and other cables).
2. Close Windows or antivirus program firewall.



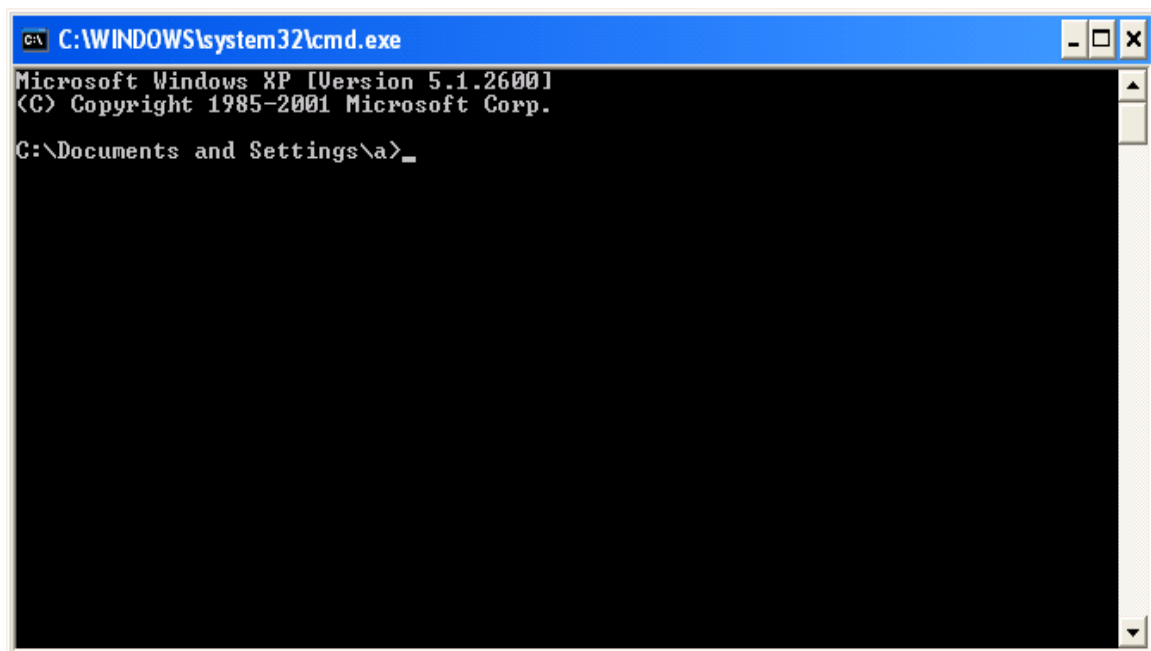
3. Run ETM program.



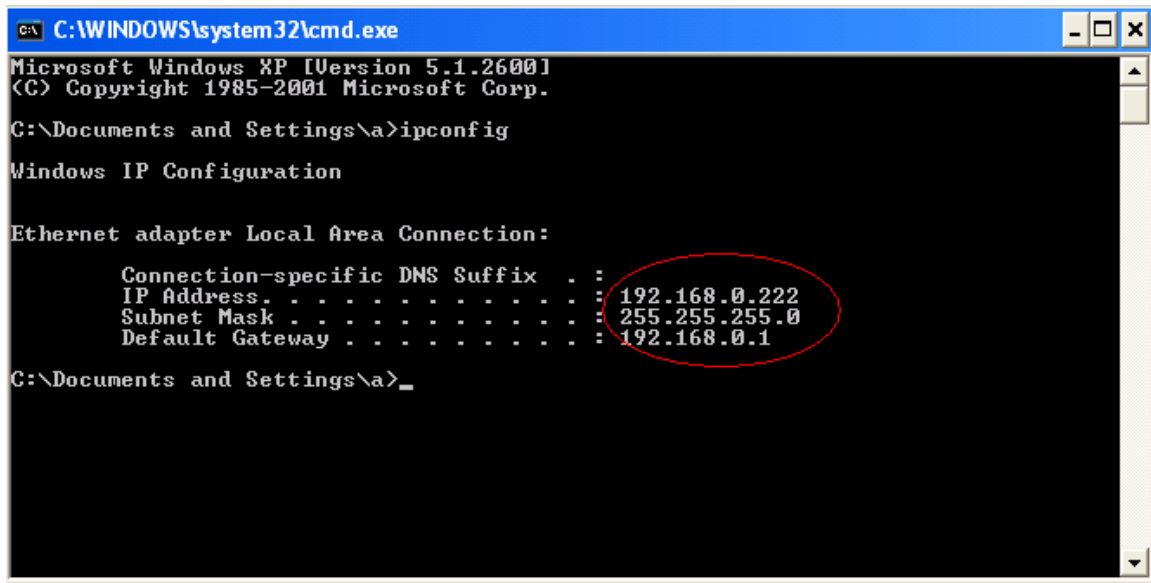
3. You will see the initial IP address. (192.168.0.100) ?? or 192.168.1.100



4. If your pc IP address is not same with converter. You have to do process 4 to six step.



5. Check PC IP address. (ipconfig)



```
C:\WINDOWS\system32\cmd.exe
Microsoft Windows XP [Version 5.1.2600]
(C) Copyright 1985-2001 Microsoft Corp.

C:\Documents and Settings\>ipconfig

Windows IP Configuration

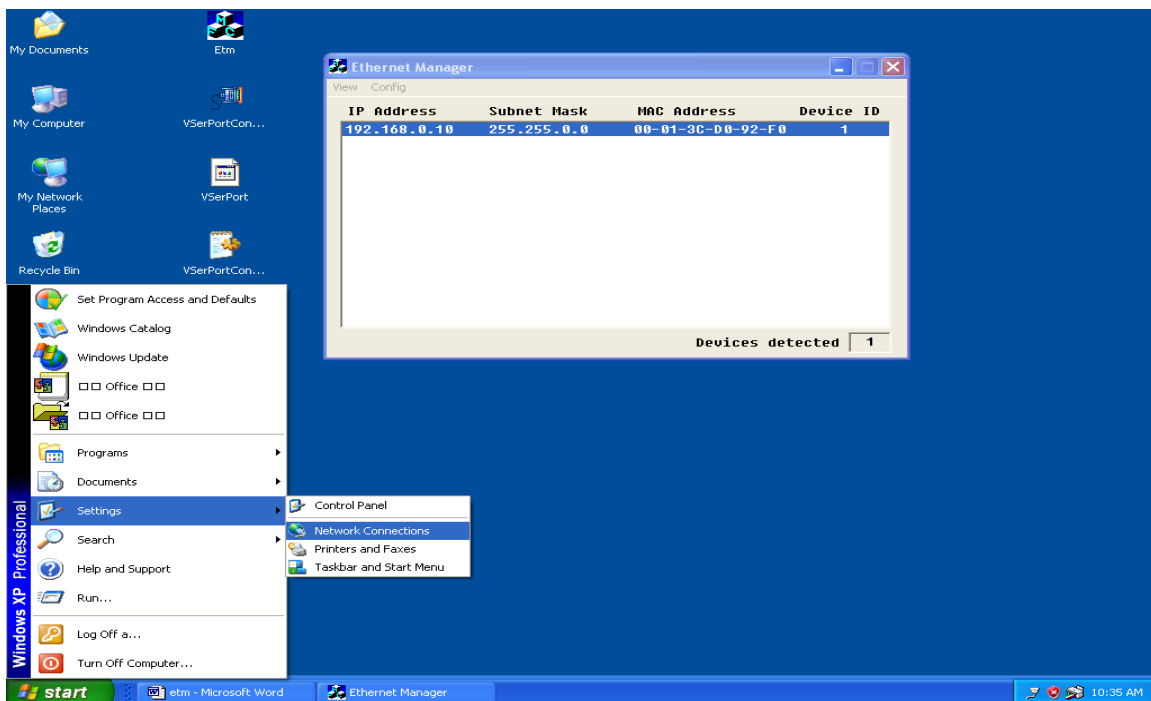
Ethernet adapter Local Area Connection:

    Connection-specific DNS Suffix  . : 
    IP Address. . . . .               : 192.168.0.222
    Subnet Mask . . . . .             : 255.255.255.0
    Default Gateway . . . . .         : 192.168.0.1

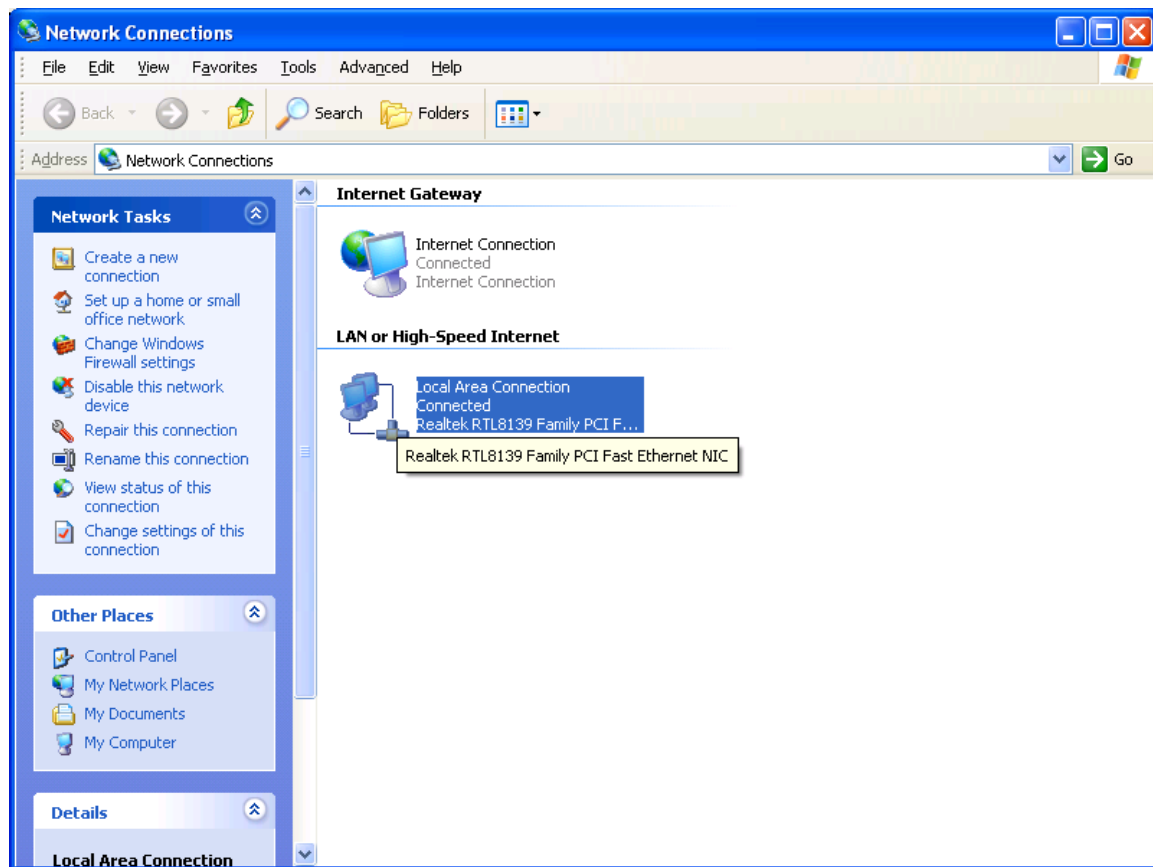
C:\Documents and Settings\>_
```

6. In the different IP address

6-1.1 Select Network Connections of Control Panel of PC.



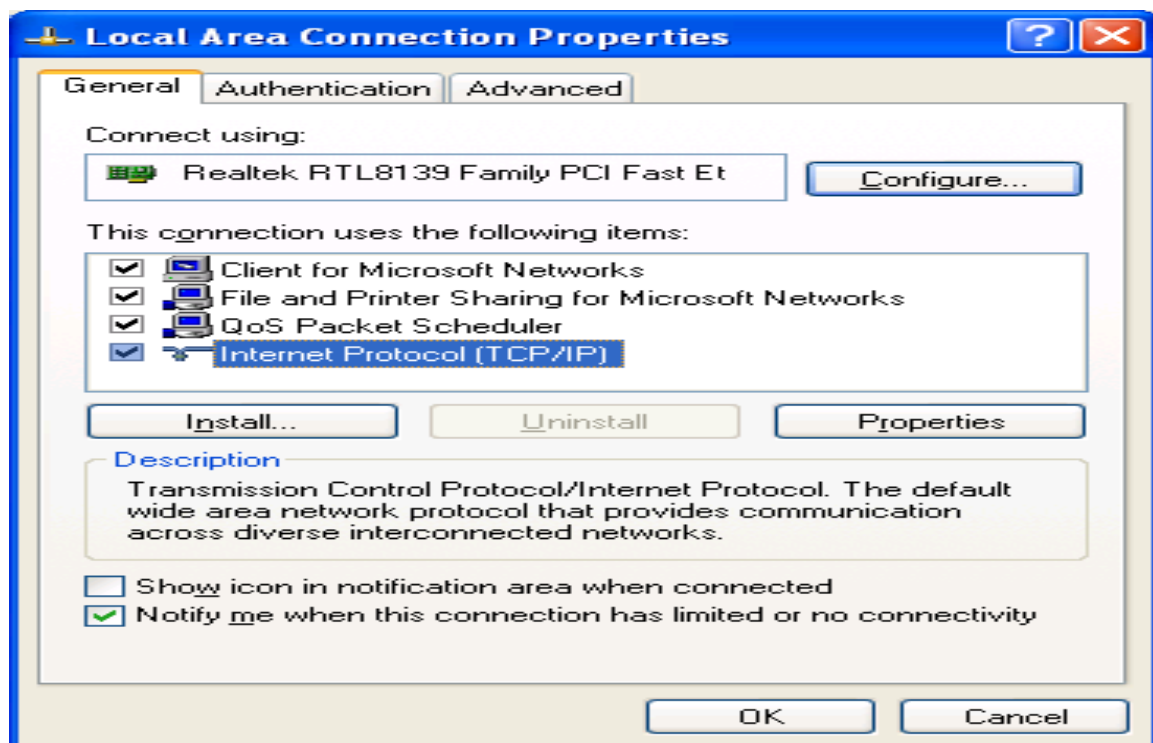
6-1.2 Select Local Area Connection Connected of Network Connections.



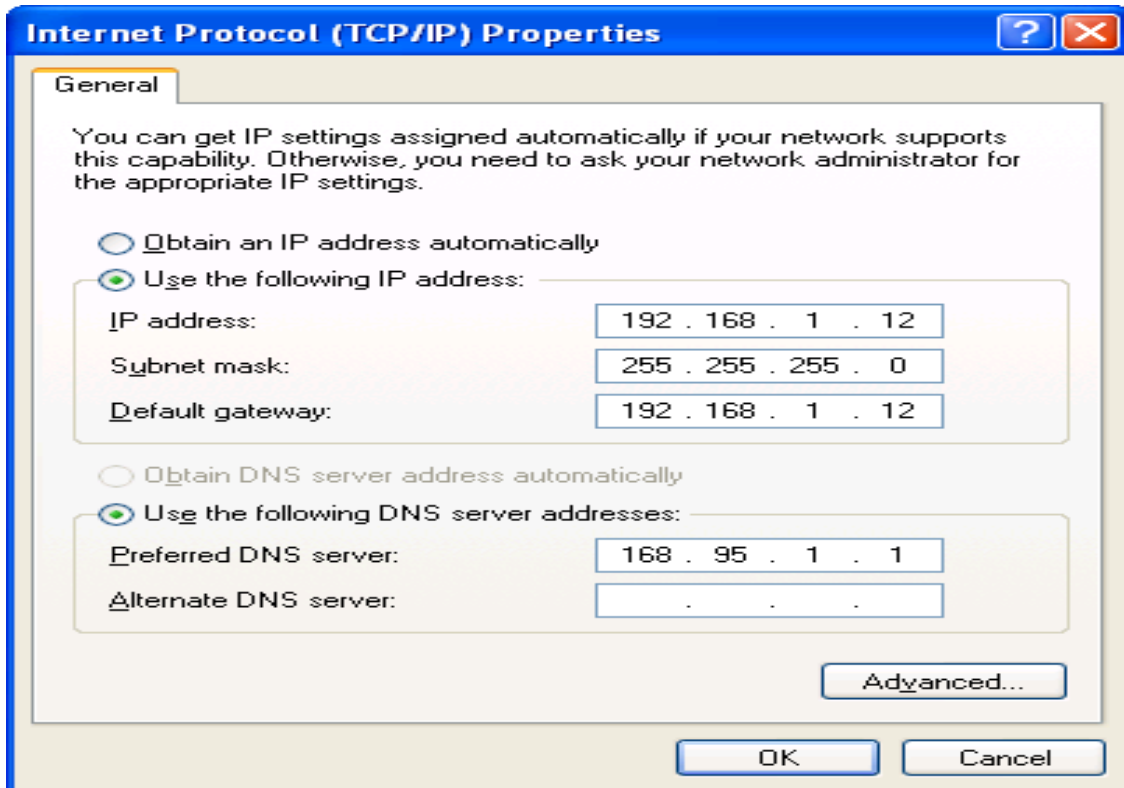
6-1.3 Press right key of mouse then choose properties button of Network Connections.

6-1.4 Select International protocol (TCP / IP) item of Local Area Connection properties.

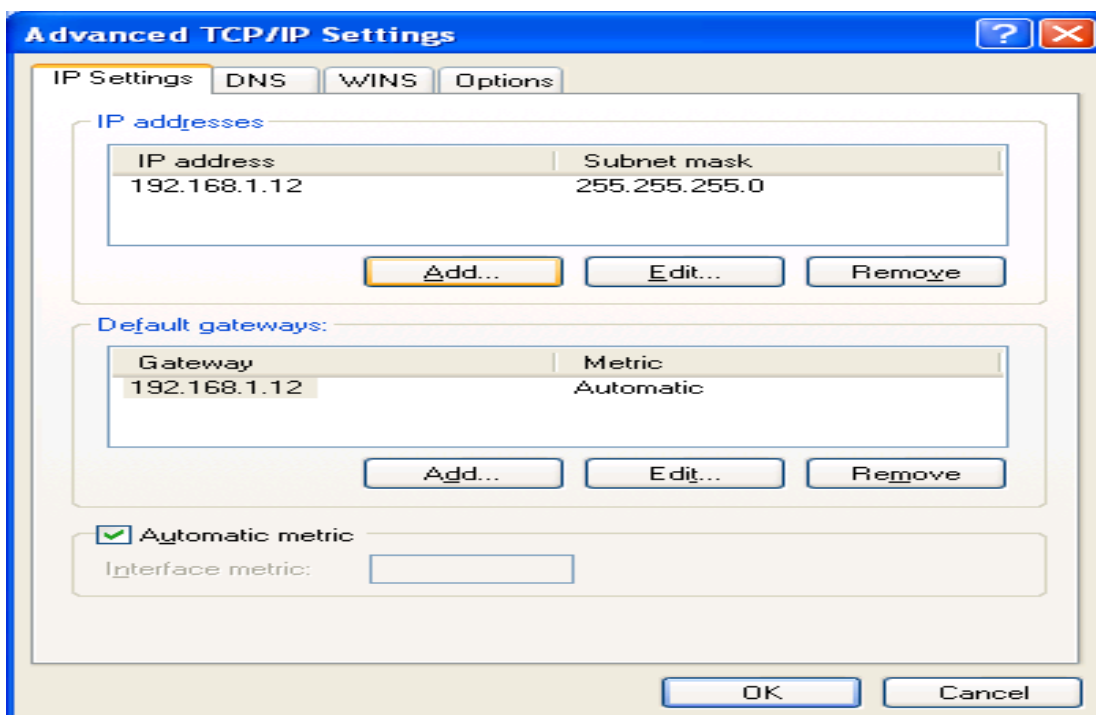
6-1.5 Select properties button International protocol (TCP / IP).



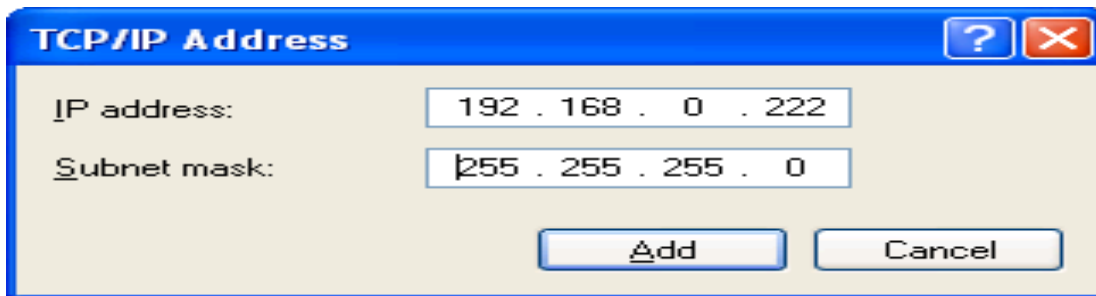
6-1.6 Select Advanced button of Internet Protocol (TCP / IP) Properties.



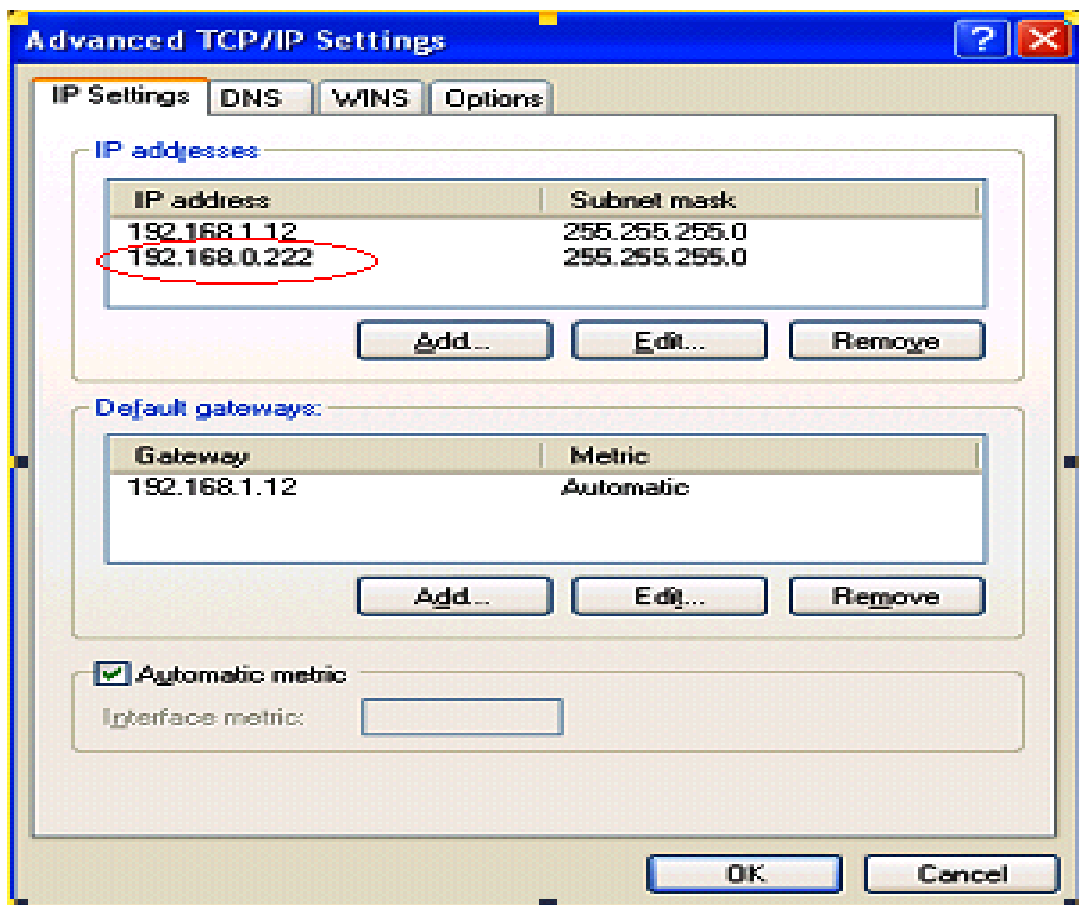
6-1.7 Select Add button of IP address.



6-1.8 Add new IP address of TCP / IP Address.



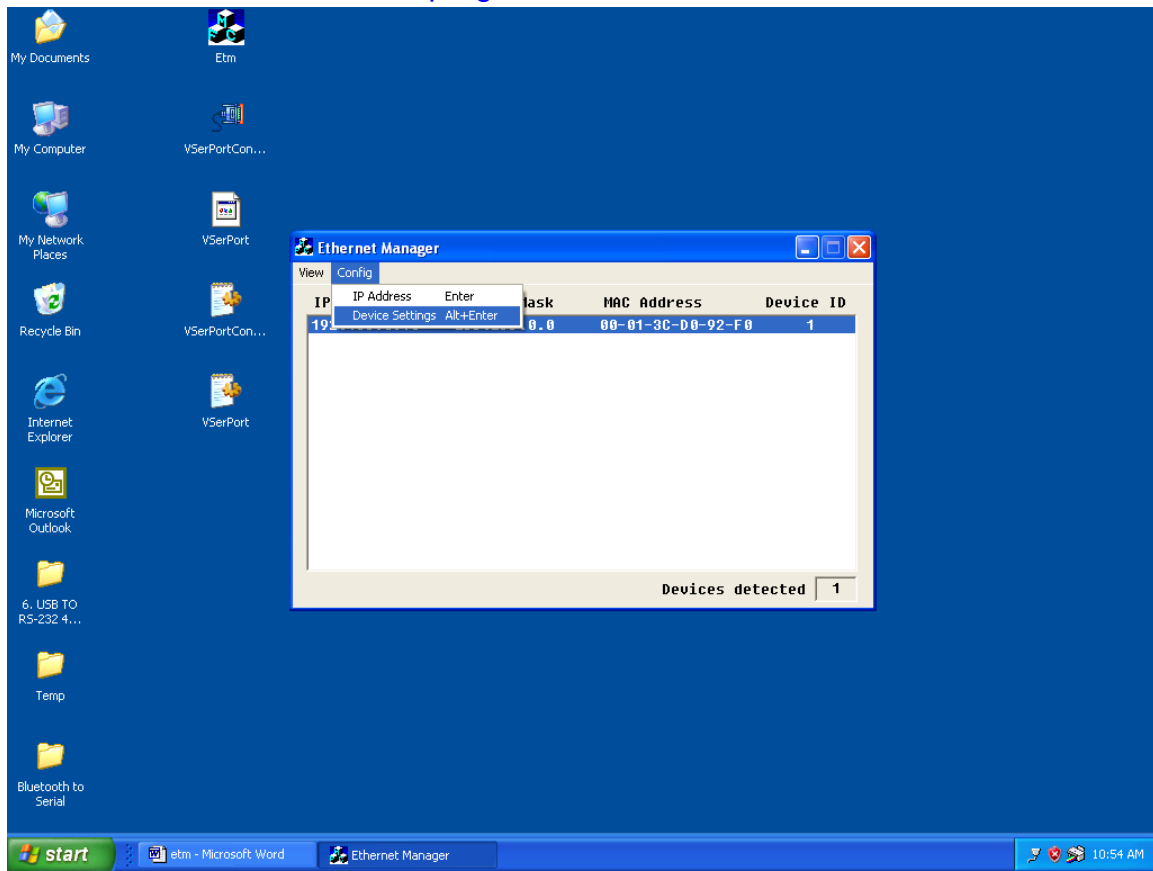
6-1.9 Press the OK button of Advanced TCP/ IP Settings.



6-2. Change both converter and PC in the same IP address through ETM program.

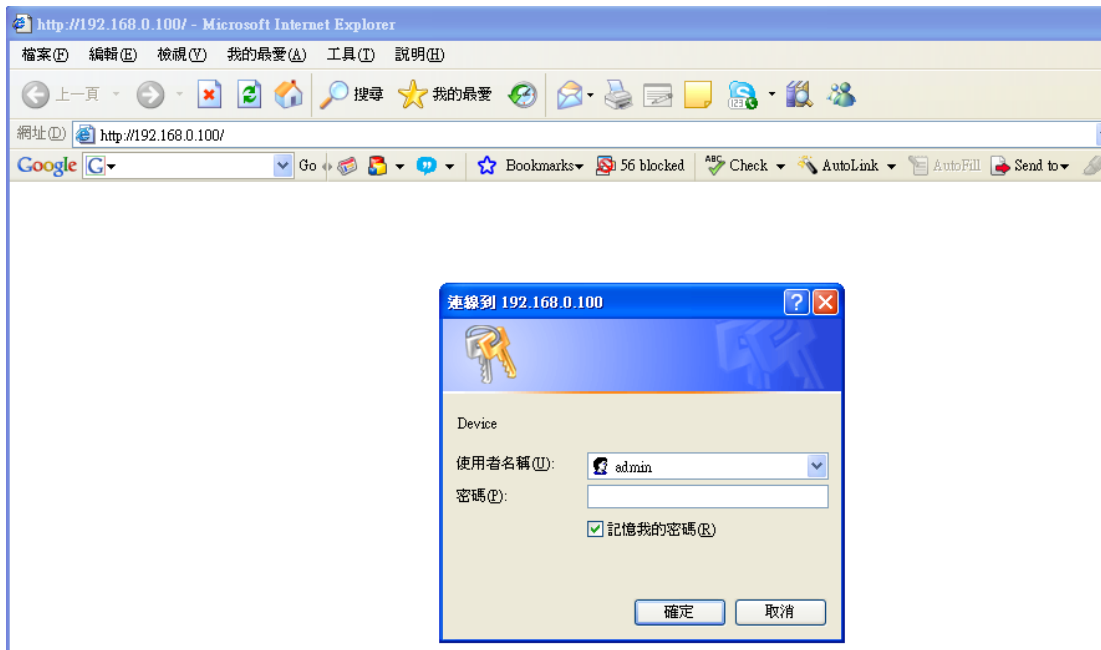
7. Select Device settings item of config of ETM program.

8. Press Enter button of ETM program.



9. Press the Login button of ETM program.

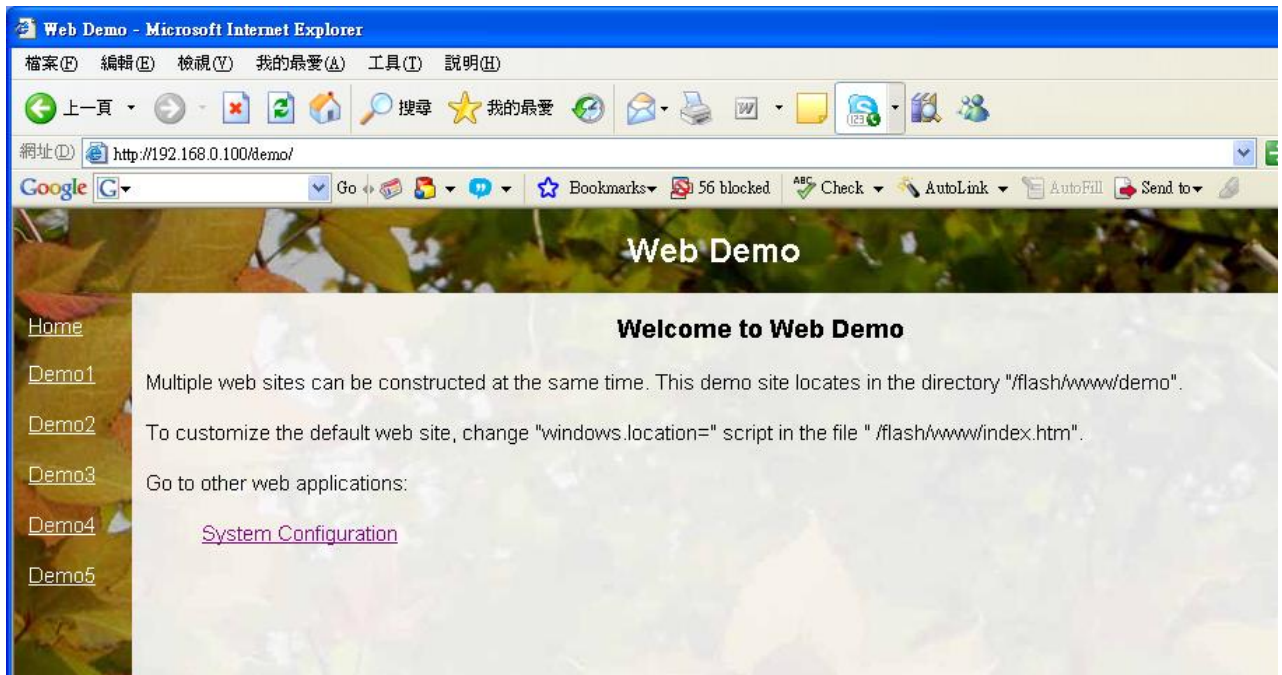
10. Get into controller setup screen of ETM program.



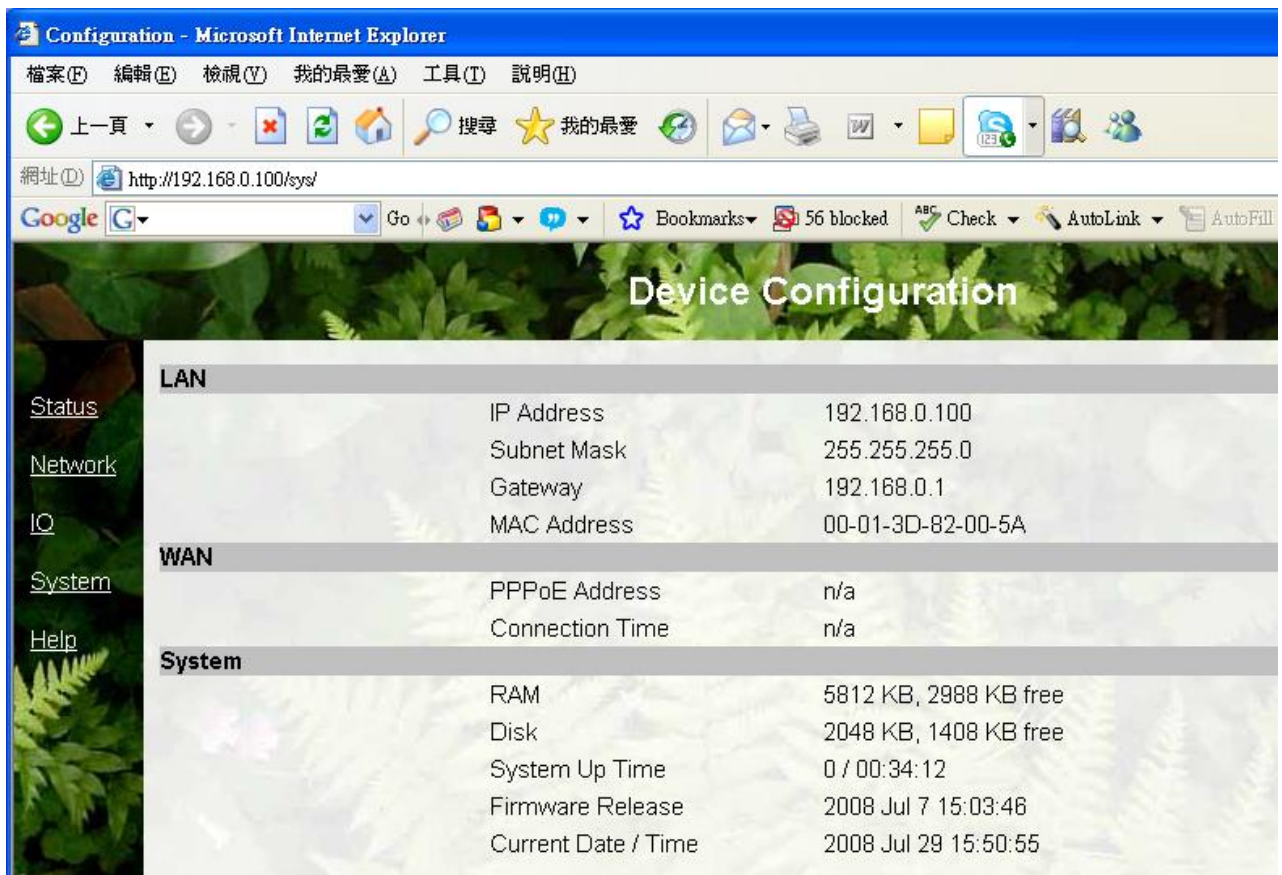
USER : admin

Password : (none) press enter to login

11. press System Configuration.



12. will enter the built-in web server to setup parameter



13. you can press HELP to see the programmable guide

The screenshot shows a Microsoft Internet Explorer browser window. The title bar reads "Configuration - Microsoft Internet Explorer". The menu bar includes "檔案(F)", "編輯(E)", "檢視(V)", "我的最愛(A)", "工具(T)", and "說明(H)". The address bar shows "http://192.168.0.100/sys/". The page content features a navigation menu on the left with links for "Status", "Network", "IQ", "System", and "Help" (circled in red). The main content area is titled "Device Configuration" and contains a table with the following data:

LAN		
IP Address		192.168.0.100
Subnet Mask		255.255.255.0
Gateway		192.168.0.1
MAC Address		00-01-3D-82-00-5A
WAN		
PPPoE Address		n/a
Connection Time		n/a
System		
RAM		5812 KB, 2988 KB free
Disk		2048 KB, 1408 KB free
System Up Time		0 / 00:34:12
Firmware Release		2008 Jul 7 15:03:46
Current Date / Time		2008 Jul 29 15:50:55